

Launch your own customized programmatic advertising platform

Your media buying strategy, our programmatic
experience: a winning combination!

BidsCube 



Bidscube is a full-stack Adtech platform that enables brands and agencies to target, deliver and analyze their digital advertising efforts.

Our team started a long journey in the field of advertising back in 2014. Over time, we gained expertise, and to make digital advertising accessible to everyone, we created our solution.

\$100m+

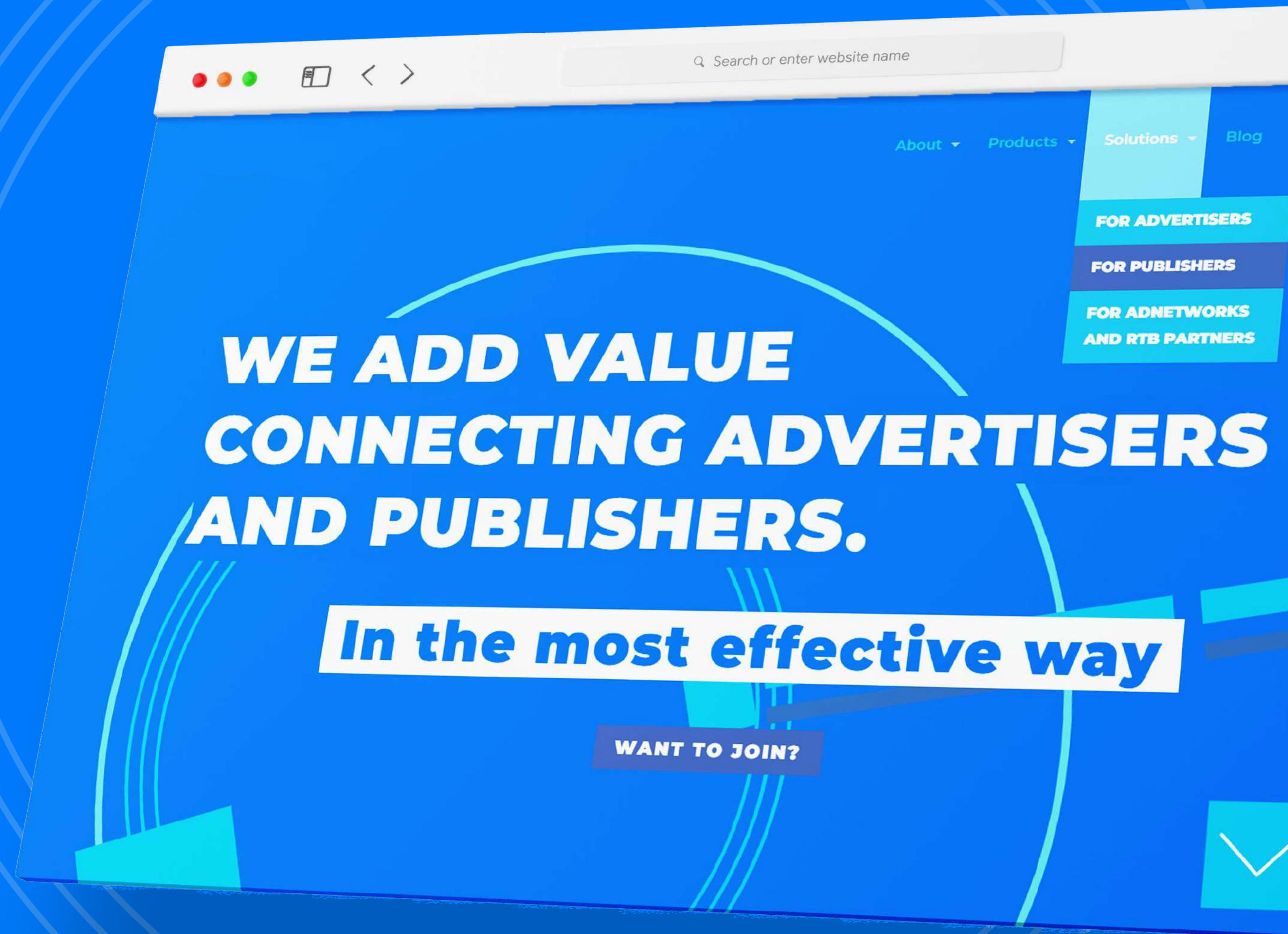
Gross Revenue
across our
ecosystem yearly

250+

Active clients
using our
technology

2010

The year we
started in digital
advertising



94%

of partners have boosted programmatic ads performance using BidsCube DSP

* according to an internal survey of more than 250+ partners and 150+ customers of BidsCube ecosystem solutions

6%

Achieved the same results as before

BE SURE OF THE RESULT

102M+ imps / mo

Total capacity across all ad formats

24/7 support

40+ account managers

55+ campaign settings

You will get what you need!

100% of verified traffic

We're using industry leading ad scanners

ADVERTISE WITH YOUR RULES USING WHITE-LABEL DSP

It is a simple but professional tool to start advertising at the next efficiency level without any middlemen.

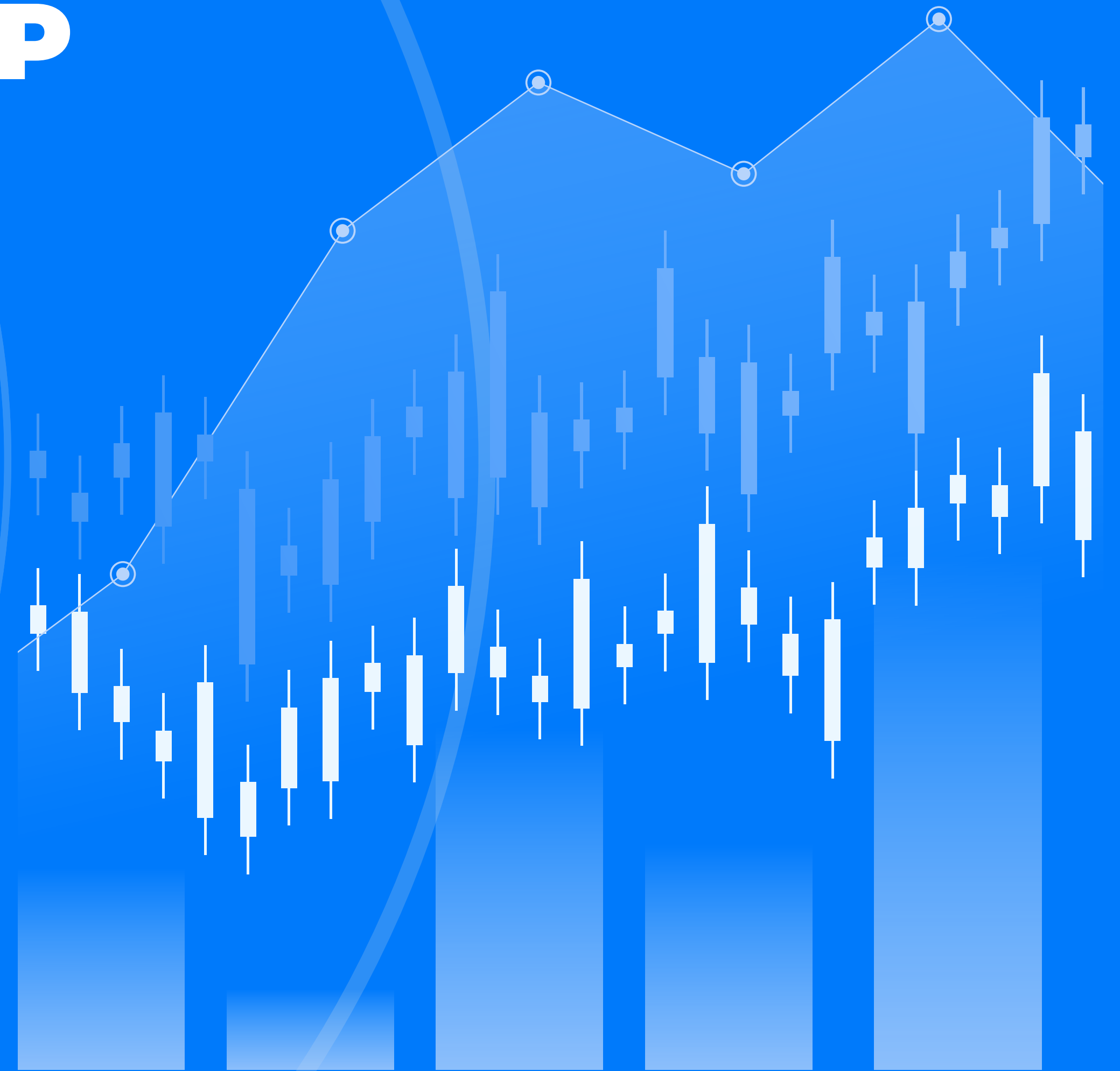
Owning a white-label solution gives you control over the data and settings of any part of programmatic trades.

Money&time savvy solution

Grow your income instead of in-house software development

100% customizable platform

No one will limit you on the path to success!



SAVE TIME AND MONEY WITH WHITE-LABEL DSP SOLUTION

Instead of an expensive and lengthy process of in-house development of software, BidsCube White-Label DSP solution will save you money, time and gives you an ultimate package of tools to increase your revenue from day one!

BENEFITS OF BIDSCUBE WLS ▼

BIDSCUBE WHITE LABEL DSP

All-in-one platform that allows you to launch your own customized programmatic advertising platform

- ▶ More than 150 ecosystem partners are ready to trade with.
- ▶ 10+ years of our team experience in advertising is your key to success.
- ▶ Ecosystem and complex solution. You will get all you need!
- ▶ Efficient and reliable software without downtimes or interruptions.
- ▶ Cost and time-saving solution.
- ▶ Constantly upgrading our platform to the latest market needs.

from \$300/month
Starting price for 1 AdServer

IN-HOUSE SOFTWARE DEVELOPMENT

The hard and long journey to success. Without guarantees

- ▶ Hiring high-level Dev and AdTech specialists with competitive salaries.
- ▶ Time and money investments in product development, infrastructure and architecture.
- ▶ Resources for constant upgrading and maintenance.
- ▶ Custom development of the connection to every market player.

≈ \$500,000/yearly
Starting cost of Ad software development

ENHANCE CAMPAIGN RESULTS WITH HIGH-QUALITY AUDIENCE DATA

OnAudience

Leverage high-quality audience data to optimize targeting & boost campaigns performance. Select from +2,500 Data Segments based on user including raw data from over 18 billion of devices to create personalized customer experience and understand audience behavior.

Cross-Device Targeting

Engage users on every device and reduce ad waste

Behavior Based Personalization

Create ads tailored strictly to customer behavioral profiles

Streamlined Resources

Reduce time and resources with precise & qualitative data

360-degree customer view

Get additional user details, insights, preferences and demographics

Proven-only data sources:

Publishers

Networks

Technology providers

Analytic solutions

Research Companies

Media sellers & buyers

Social Media Plugins

Customer-based targeting

▶ Events

▶ Interests

▶ Demographics

▶ CTV Data

▶ Purchase Intents

BIDSCUBE IS A TRANSPARENT ADVERTISING ECOSYSTEM

SELL SIDE

Publishers
SITE / APP OWNERS

SUPPLY-SIDE PLATFORM

**BidsCube SSP
& Supply Partners**

**BidsCube
Community**

**BidsCube DSP
& Demand Partners**

DEMAND-SIDE PLATFORM

Advertisers
BRAND/AGENCY

BUYER SIDE

Transparency

Understanding the importance of transparency in trading allows us to be open in all aspects of working with our partners.

Integrity

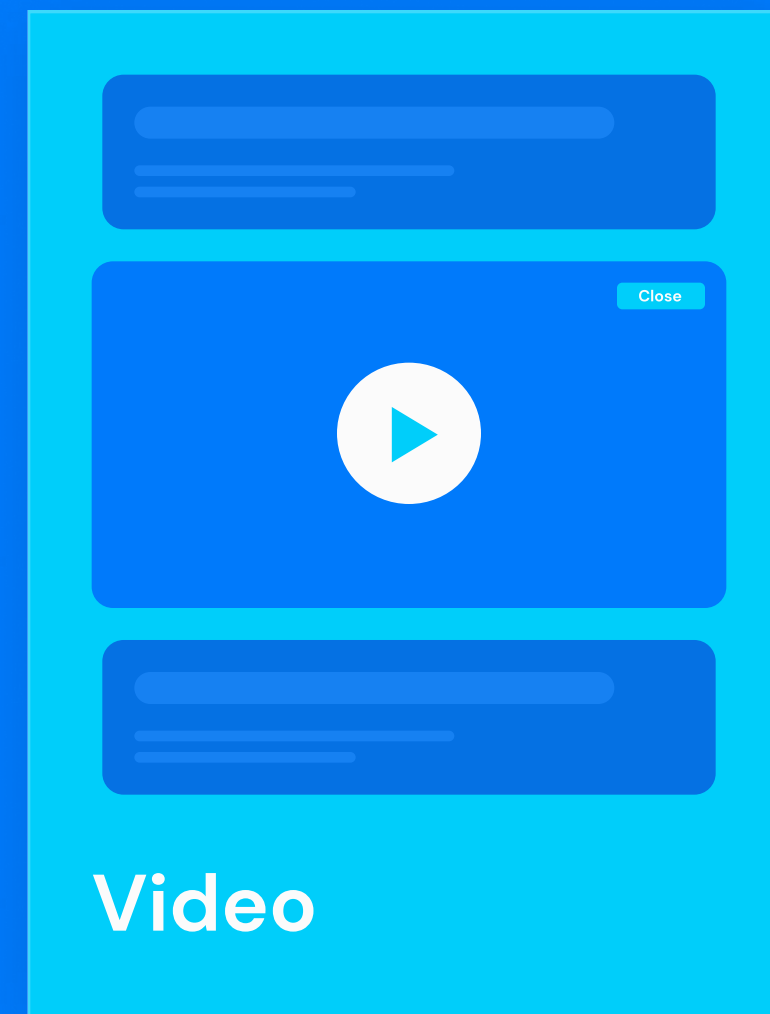
Our solutions are connected in the ecosystem, allowing us to provide even more profitable services.

Efficiency

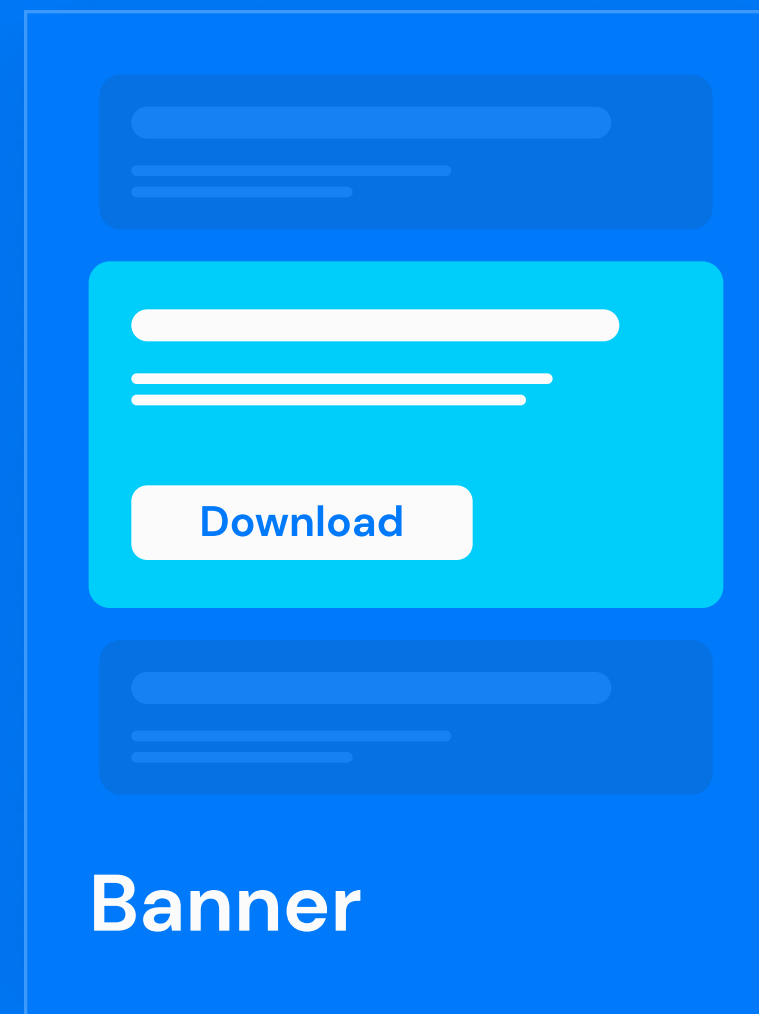
Our main goal is to improve your result and help you to earn more using BidsCube products.

ALL AD FORMATS THAT ARE AVAILABLE IN THE INDUSTRY

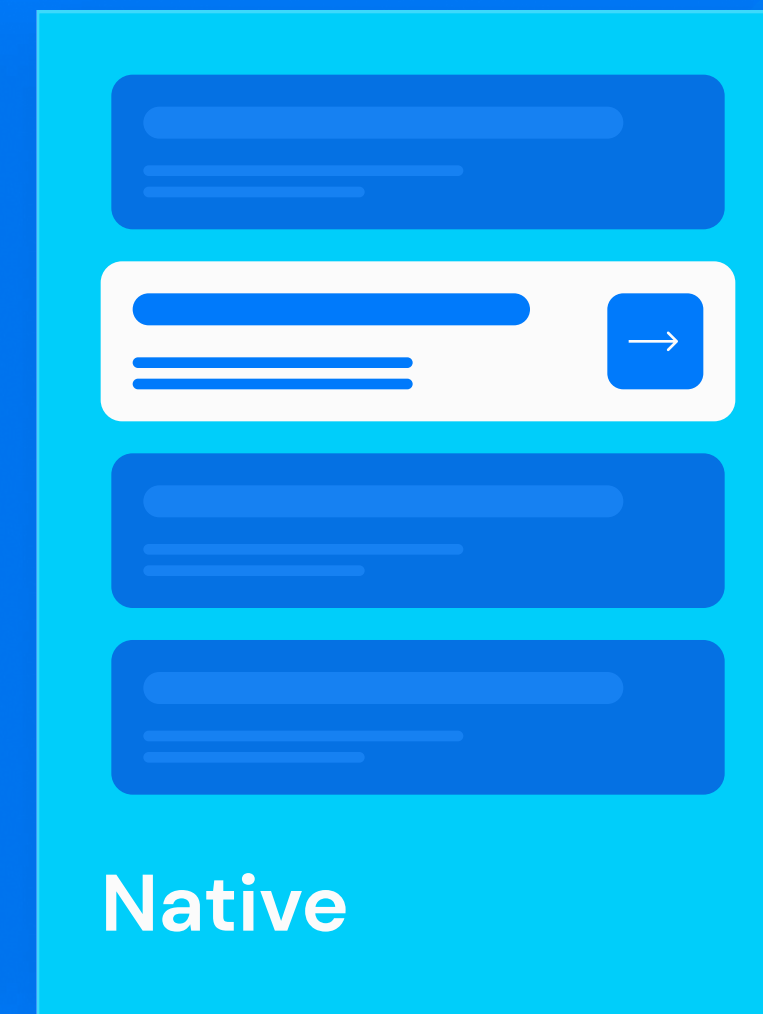
BidsCube DSP allows our customers to efficiently work with the most common ad formats – Banner, Video, Native, Audio, and across all devices.



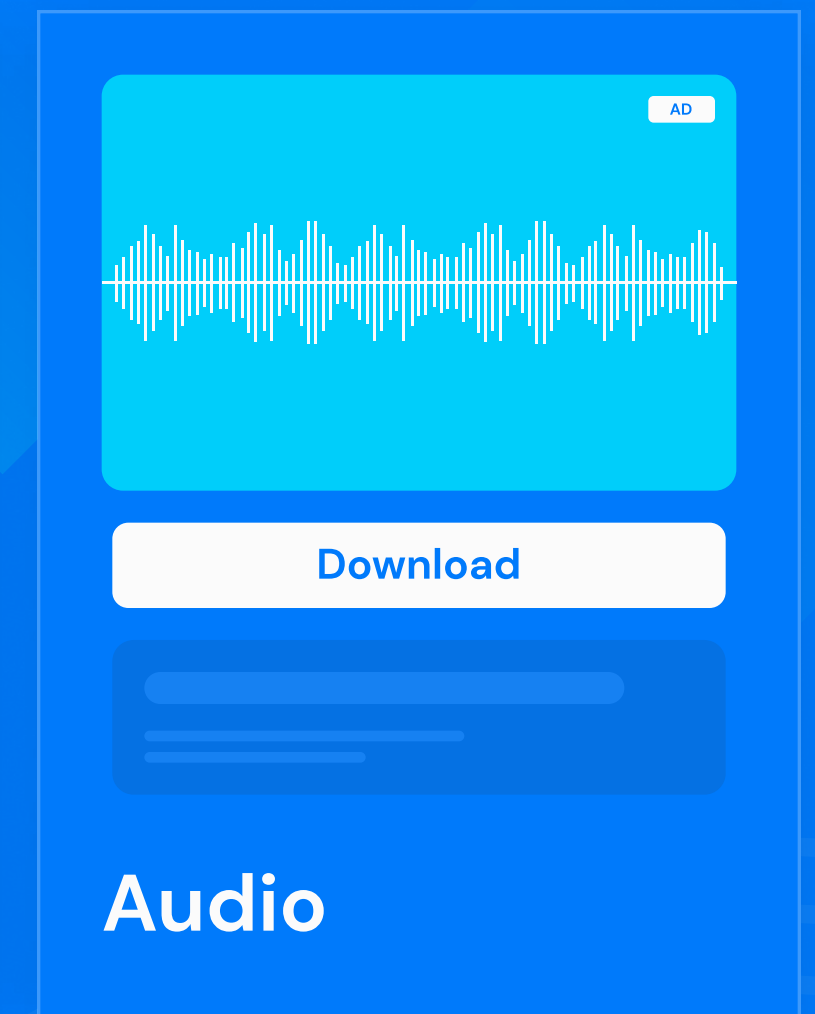
Video



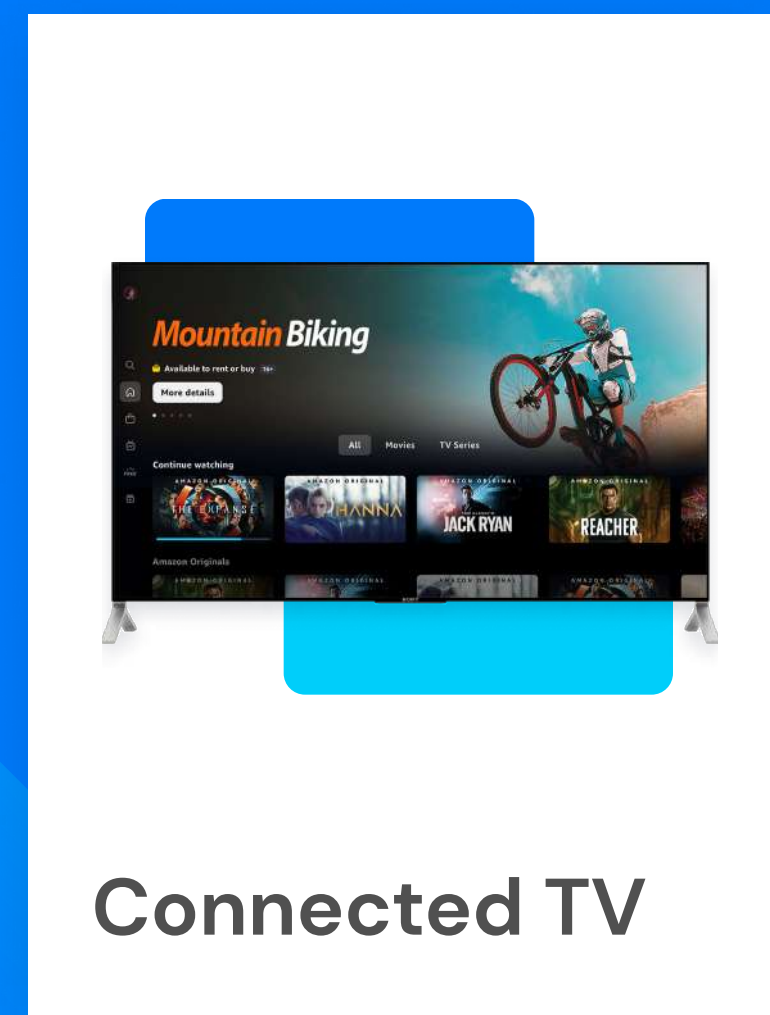
Banner



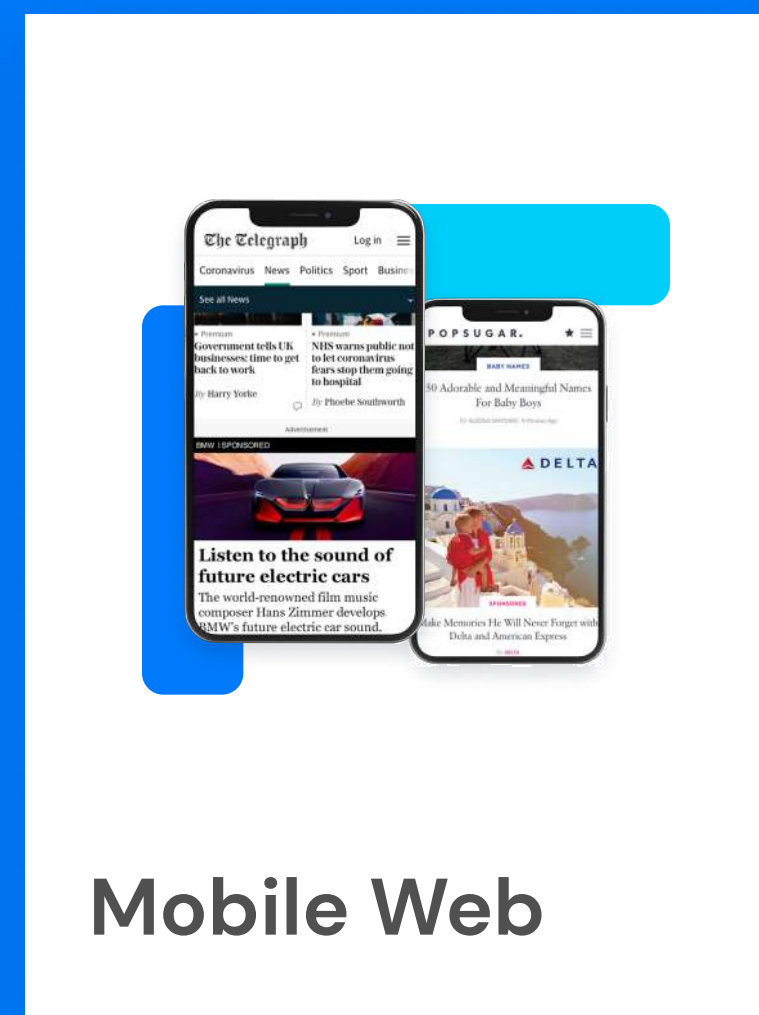
Native



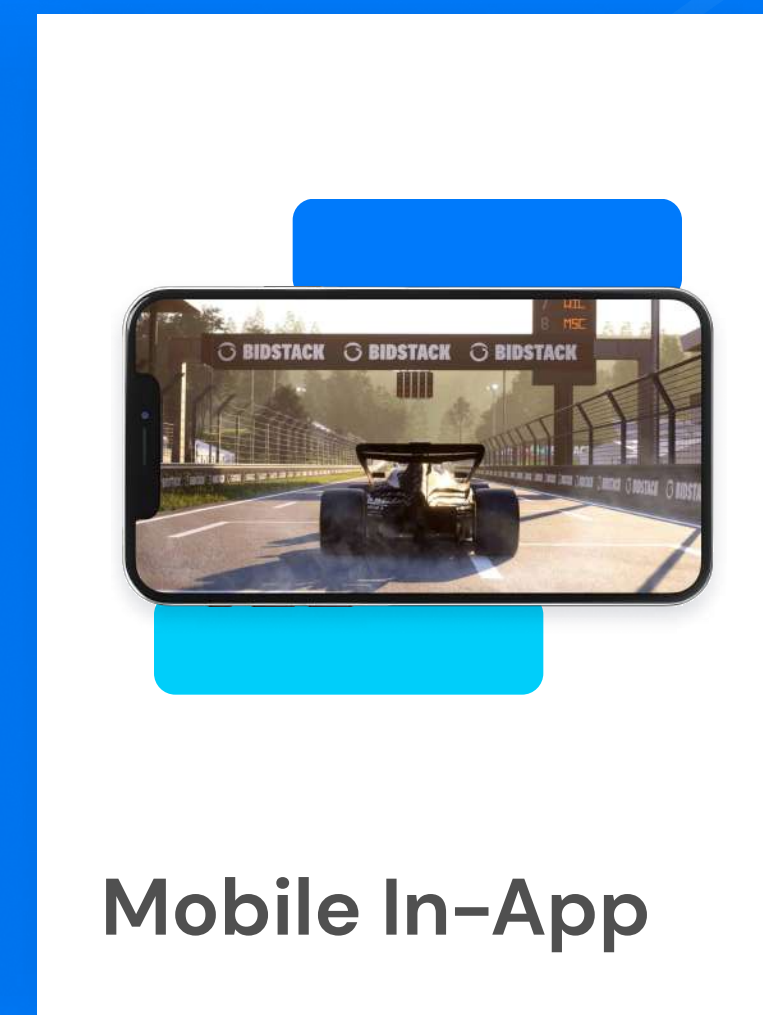
Audio



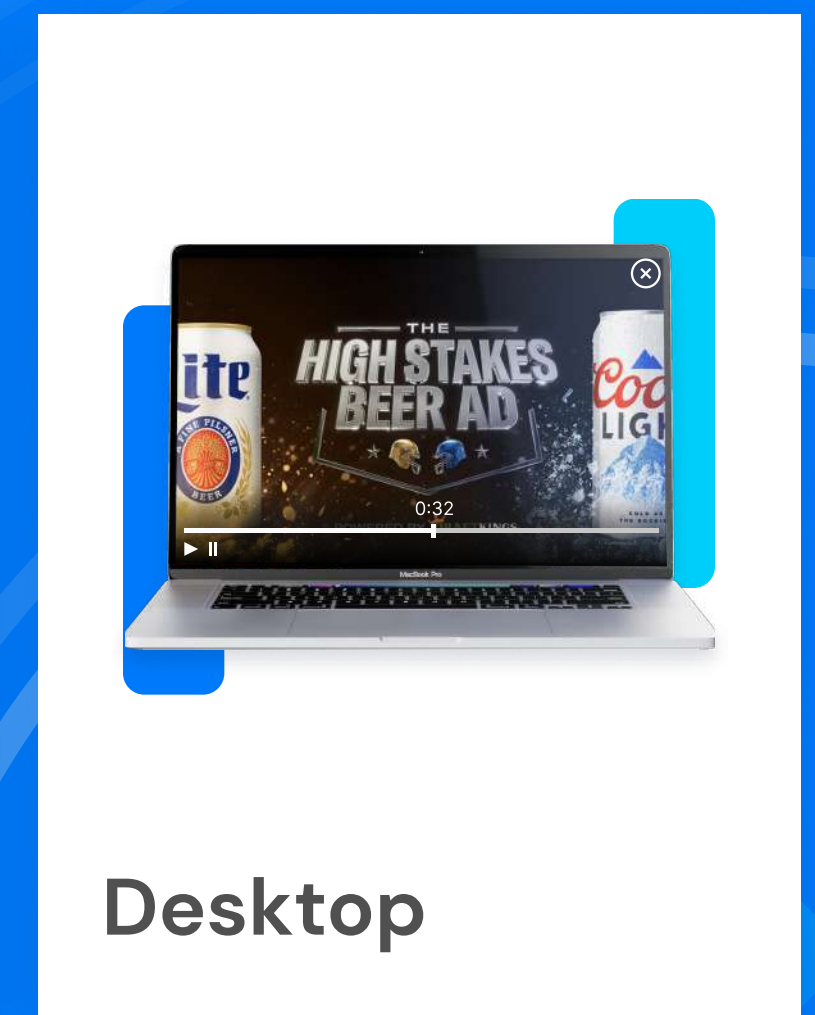
Connected TV



Mobile Web



Mobile In-App



Desktop

GET THE MOST OUT OF PROGRAMMATIC WITH ENHANCED TARGETING OPTIONS

Dozens of other options for your success

- IAB Categories Targeting
- Retargeting
- Frequency Cap
- Impressions Cap
- Dynamic Price
- Click Optimizer
- Time Targeting
- PMP Deal
- And many more!

Precise geographic targeting

- Country, State, City
- IP-address
- Extended GPS targeting
- ZIP codes
- Include/Exclude Option
- Carrier

Full control over the campaign budget

- Budget Distribution
- Bid Price
- Transaction History
- Convenient Payments
- Daily Cap
- Budget Usage Rate

Comprehensive device targeting

- Browser
- Device language
- Connection Type
- Traffic Type
- Device Type
- OS
- Carrier

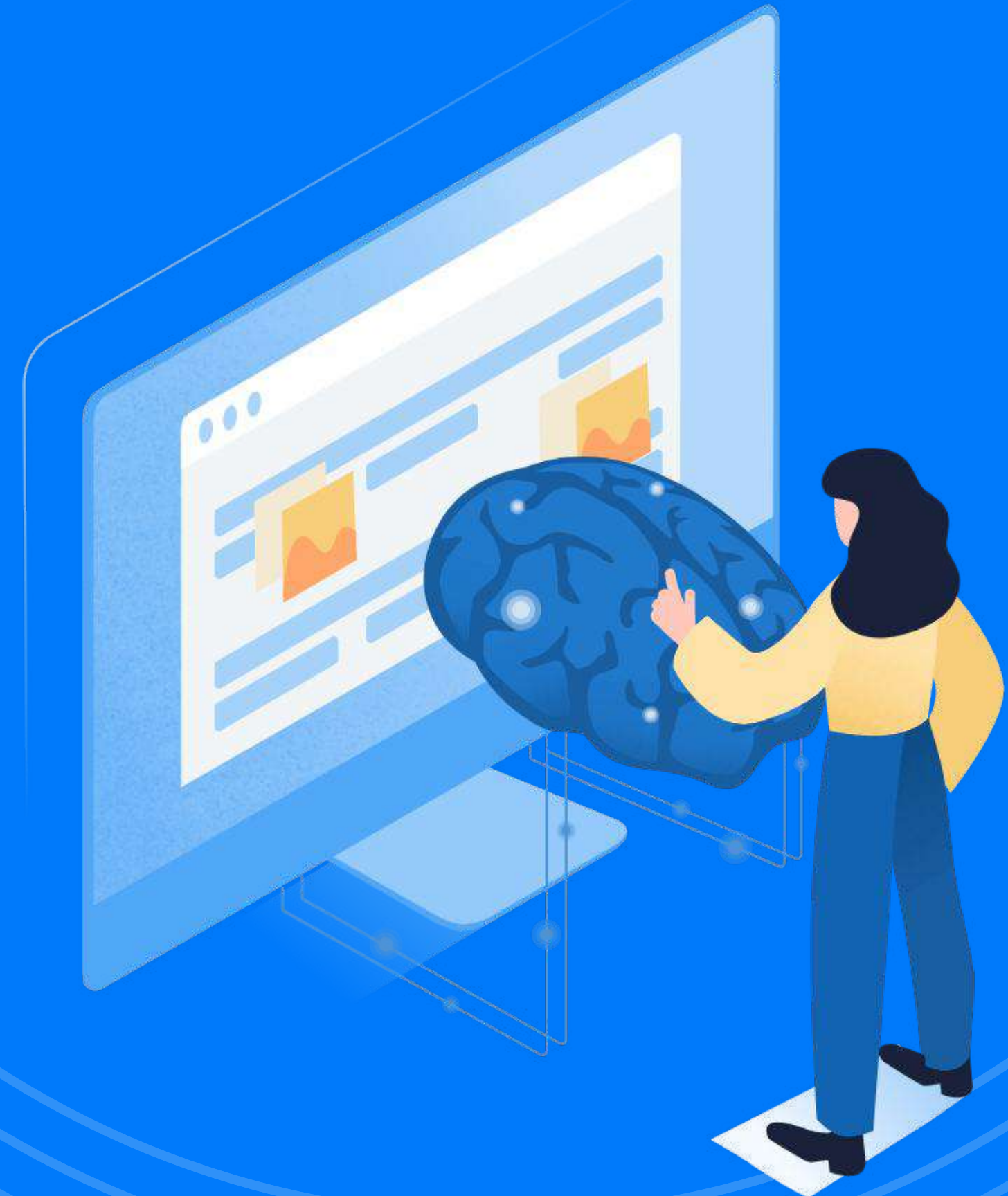
24/7 SUPPORT & ACCESS TO THE WHOLE BIDSCUBE TEAM'S EXPERTISE

In the digital world of programmatic advertising, we offer the most live contact to increase your results: your manager is available for any questions 7 days a week.

Our technical specialists take over all the development and integration work, providing an individual approach for each client following their specific requests.

Experts with 10+ years of proven track record

Our tech staff and AdOps are formed by the best AdTech and MarTech industry specialists!



INDUSTRY-LEADING CERTIFICATIONS AND PARTNERSHIPS

We work with trusted industry leaders from ad scanners, and on the product side, we offer out-of-the-box integrations with many platforms to give our customers an ultimate choice.

With BidsCube's comprehensive approach to quality, rest assured your ad campaigns run in a safe environment.

We provide complete protection for all participants: we check 100% of traffic using advanced scanners, while our account managers manually recheck all traffic and creatives.



REAL-TIME PERFORMANCE TRACKING AND REPORTING

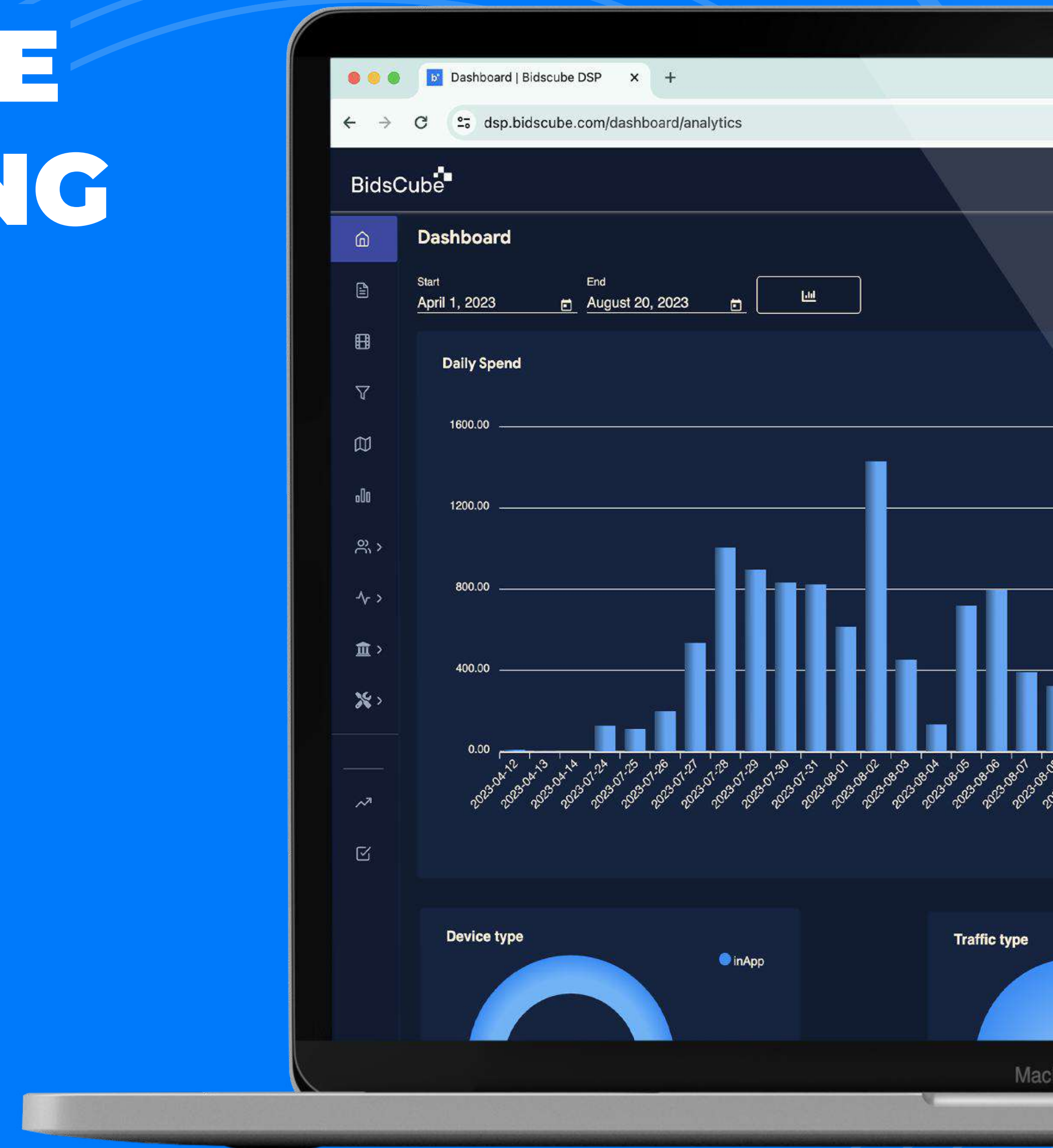
With the help of our platform, you can easily receive real-time data and control your results with the next-step level of efficiency. There is no longer a need to wait for reports to evaluate performance.

Real-time data and filtering

Stay up to date with the latest performance of your ads

Easy-to-use interface

Manage your campaigns using a convenient platform



UNLOCK ACCESS TO THE BIDSCUBE COMMUNITY!

Bidscube Community is the final stage of our ambition to create the most profitable cooperation between publishers&advertisers, white-label partners, and AdTech companies with the goal to produce more value for all participants.

Our technological solution ensures income growth and guarantees financial security for all members of the environment without additional fees.



Financial security

100% secure space for all participants in the programmatic ecosystem. We guarantee 100% timely payments, as well.

Direct trading

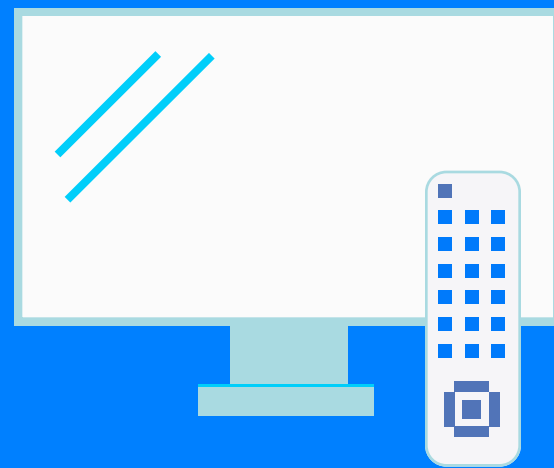
A massive solution that will give you access to direct trading with over 250 traffic providers and other partners.

Single contract

Don't waste your time agreeing on working conditions with all partners. We'll do it for you.

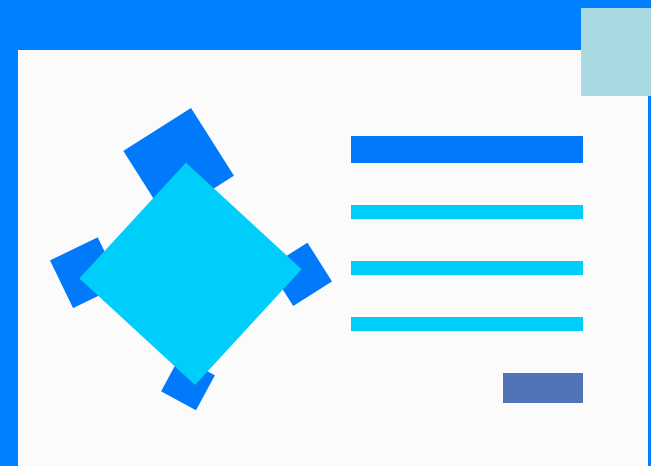
250+ ACTIVE PARTNERS TRADING INSIDE BIDSCUBE COMMUNITY

With our White Label solution and BidsCube Community, you can get instant access to thousands of sites, apps, mobile phones, or CTV devices with no need to find them by yourself.



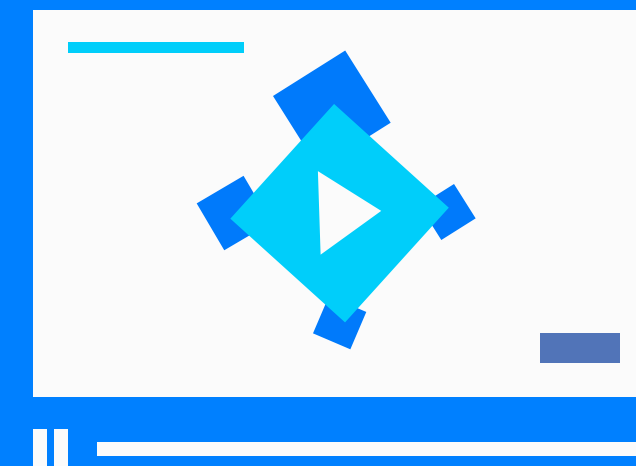
CONNECTED TV

- ♦ 360K+ QPS
- ♦ 44M imps / month



BANNER

- ♦ 140K+ QPS
- ♦ 30M imps / month



VIDEO

- ♦ 230K+ QPS
- ♦ 28M imps / month

BIDSCUBE COMMUNITY TOP-BUNDLES



2m+

Monthly viewers




180k+

Monthly viewers



600k+

Monthly viewers



120k+

Monthly viewers



10k+

Monthly viewers




80k+

Monthly viewers




150k+

Monthly viewers




8k+

Monthly viewers



1m+

Viewers



10k+

Viewers

CONFIDENTIALITY

Confidentiality is crucial

By maintaining this clear division, we safeguard the integrity and privacy of your data. Our team operates within this framework, with no access granted to your sensitive information. This steadfast commitment to data protection forms the foundation of our ethos, guiding every decision we make.

Data Protection as Priority

Ensuring the security of your data is our foremost concern. We uphold a stringent barrier between your personal information and our day-to-day operations, guaranteeing a workspace free from any potential conflicts. This approach underscores our commitment to prioritizing your requirements above all else.

Your Peace of Mind

Rest assured, your data is handled with the utmost care and discretion. Our unwavering dedication to preserving this separation reflects our unwavering pledge to safeguard your privacy and security. Your trust is of utmost importance to us, and we continuously strive to maintain it through transparency, diligence, and a steadfast focus on your data's confidentiality.

CHOOSE PLAN THAT WORKS FOR YOU

WANT TO JOIN?

LITE

- + All ad formats and types
- + Dedicated servers
- + Traffic Bridge
- + Server monitoring tools
- + User & role management
- + Unlimited QPS
- + Limited Bidstream data access
- + Precise geo-targeting
- + Retargeting & remarketing

- ✓ Payments: Pre-pay
- ✓ Setup fee: \$0
- ✓ Minimum servers: 1

from \$300 / month

Starting price for 1 server

PRO

- + **Everything in the Lite is included**
- + Dedicated DB servers
- + White labelling
- + Your logo and color scheme
- + Pro Optimizations Tools (Auto Rules + Multipliers)
- + DMP Integration
- + Agency level of user & role management
- + Advanced bidstream data access
- + Custom development

- ✓ Revenue share 3-6%
- ✓ Setup fee: \$0
- ✓ Flexible scaling options
- ✓ Payments: NET 30
- ✓ Minimum servers: 4

from \$1200 / month

Starting price for 4 servers

ENTERPRISE

Unlock comprehensive possibilities of enterprise licensing with limitless custom development options, long-term support, and self-hosted deployment for complete operational autonomy.

**feel free to
contact us**

and discover further details



WANT TO HEAR MORE ABOUT OPPORTUNITIES TO EARN WITH BIDSCUBE ECOSYSTEM?

Get in touch with our team at any time!

Bidscube Team 

✉ sales@bidscube.com 🌐 bidscube.com