

POWERFUL AD EXCHANGE SOLUTION WITH TRANSPARENT SCALING OPTIONS

Empower your ad business with leading technology!

WANT TO JOIN?



Our team started a long journey in the field of advertising back in 2014. Over time, we gained expertise, and to make digital advertising accessible to everyone, we created our solution. It has immediately won the attention of customers! Now, BidsCube is a team of industry-proven experts developing a cutting-edge programmatic ecosystem connecting AdTech market players. We have a solution for everyone!

\$100m+

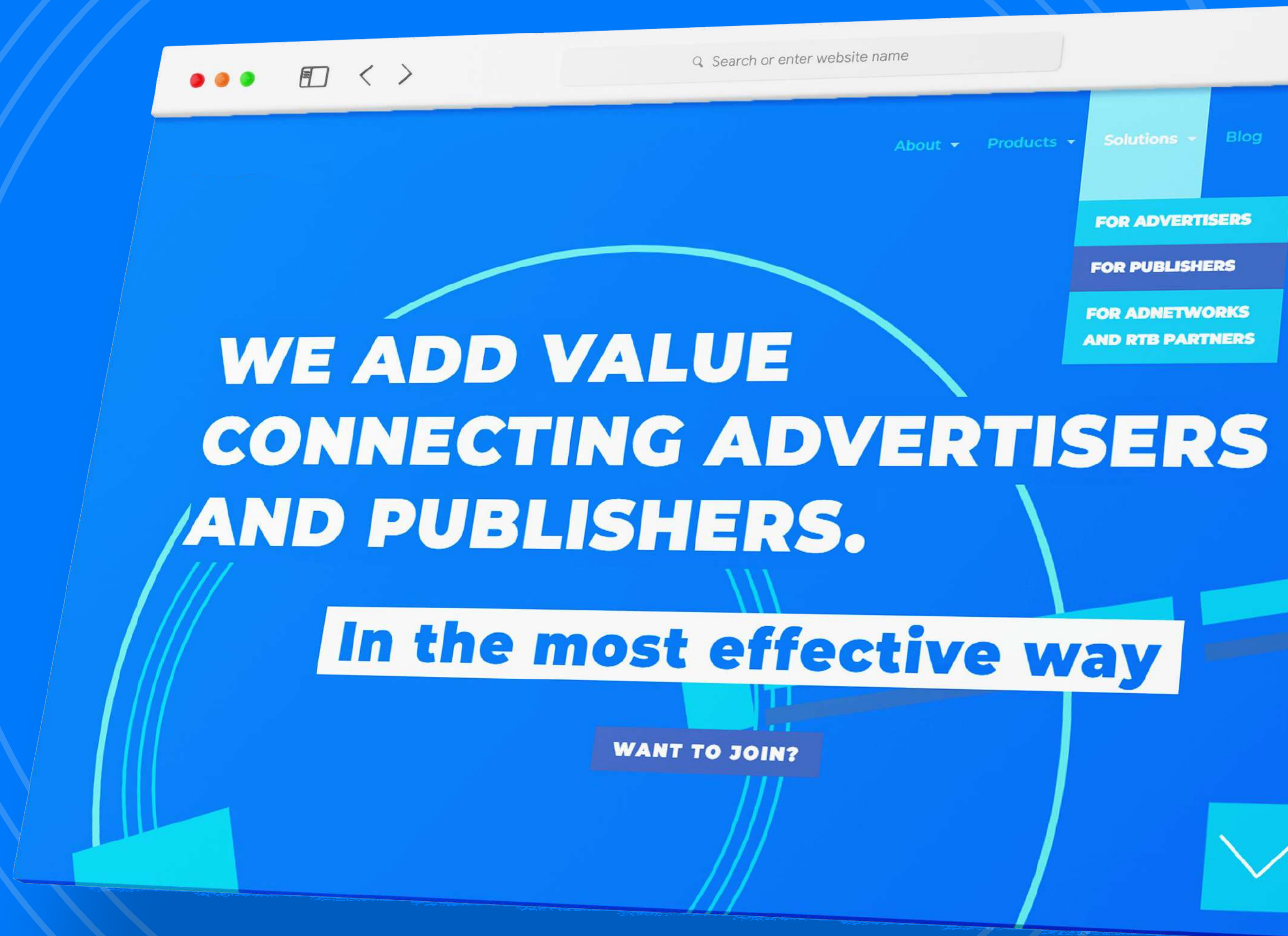
Gross Revenue
across our
ecosystem yearly

250+

Active clients
using our
technology

2010

Year we started
in digital
advertising



94%

of partners started to earn more with BidsCube white-label solutions

* according to a survey of more than 250+ partners and 150+ clients of BidsCube ecosystem solutions

6%

Achieved the same revenue results

BE SURE OF THE RESULT!

3.5m ad requests / 1 sec

A fault-tolerant and reliable solution

40+ account managers

Your manager is available 24/7

Ecosystem solutions

You will get what you need!

Fast and easy integration

5+ days estimated time for integration of the platform

SAVE TIME AND MONEY WITH WHITE-LABEL SOFTWARE

Instead of an expensive and lengthy process of in-house software development, the BidsCube AdExchange solution will save you money and time and give you an ultimate package of tools to increase your revenue from day one!

BidsCube White-label Solution

Fast and easy way to start making money in programmatic

- ▶ More than 150 ecosystem partners are ready to trade with.
- ▶ 10+ years of our team experience in advertising is your key to success.
- ▶ Ecosystem and complex solution. You will get all you need!
- ▶ Efficient and reliable software without downtimes or interruptions.
- ▶ Cost and time-saving solution.
- ▶ Constantly upgrading our platform to the latest market needs.

from \$300 / month

Starting price for the one Ad Server

In-house Software Development

The hard and long journey to success. Without guarantees

- ▶ Hiring high-level Dev and AdTech specialists with competitive salaries.
- ▶ Time and money investments in product development, infrastructure and architecture.
- ▶ Resources for constant upgrading and maintenance.
- ▶ Custom development of the connection to every market player.

≈ \$1,000,000 / yearly

Starting cost of Ad software development

ACHIEVE YOUR GOALS WITH AN ULTIMATE ALL-IN-ONE PLATFORM

BidsCube AdExchange is a feature-rich platform designed to efficiently connect available supply with demand partners using various integration types and trade with your rules, maximizing revenue.

We utilize a cutting-edge technology stack to ensure your revenue growth while the customer success team is available anytime to make it happen!

Publishers
SITE / APP OWNERS

**Supply
Partners**

**BidsCube
AdExchange**

All-in-one platform
ensuring successful
trading

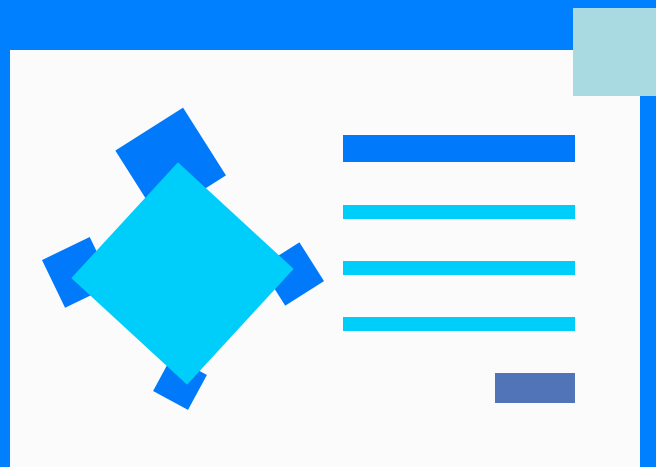
**Demand
Partners**

Advertisers
BRAND/AGENCY

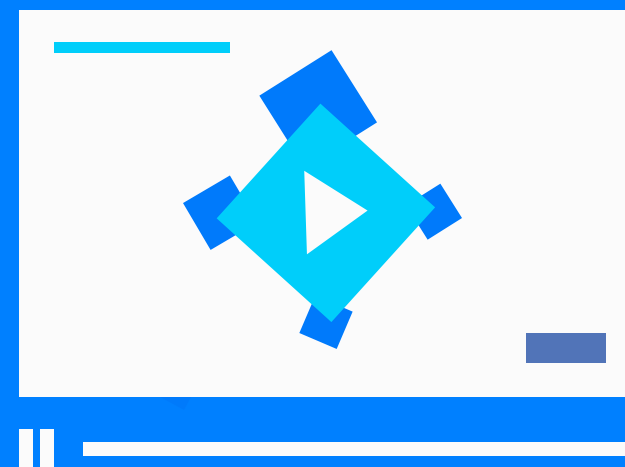
ALL AD FORMATS AND OPTIONS AVAILABLE IN THE INDUSTRY

The BidsCube AdExchange platform allows our customers to efficiently work with the most common ad formats – Banner, Video, Native, Audio, and across all devices.

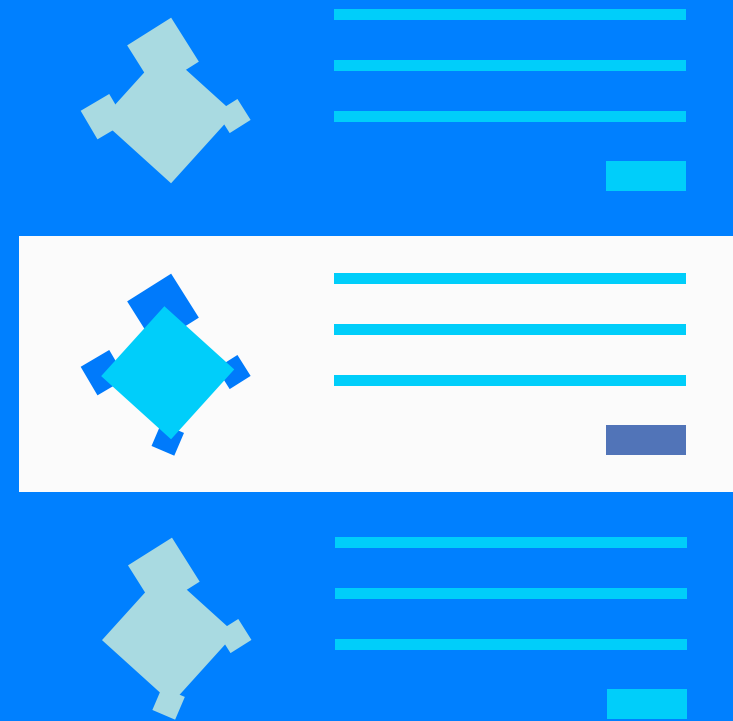
Banner



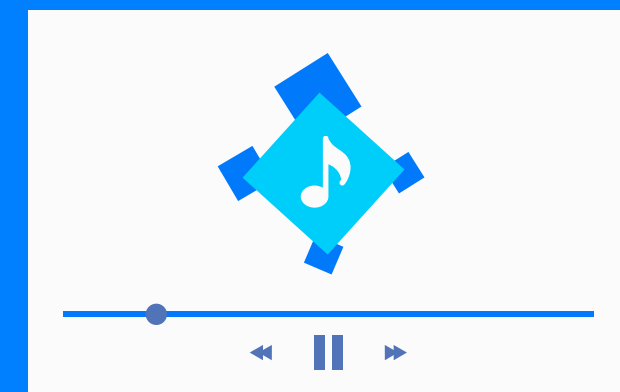
Video



Native



Audio



Mobile



Desktop



Connected TV

REAL-TIME CONTROL AND TRANSPARENT REPORTING

The BidsCube system's technical excellence helps our partners increase their revenue compared to other solutions. With leading-edge programmatic technology, our partners are sure of the result!

Real-time data and filtering

Stay up to date with the latest results of your work

Easy-to-use interfaces

Manage your campaigns or inventory using the convenient platform



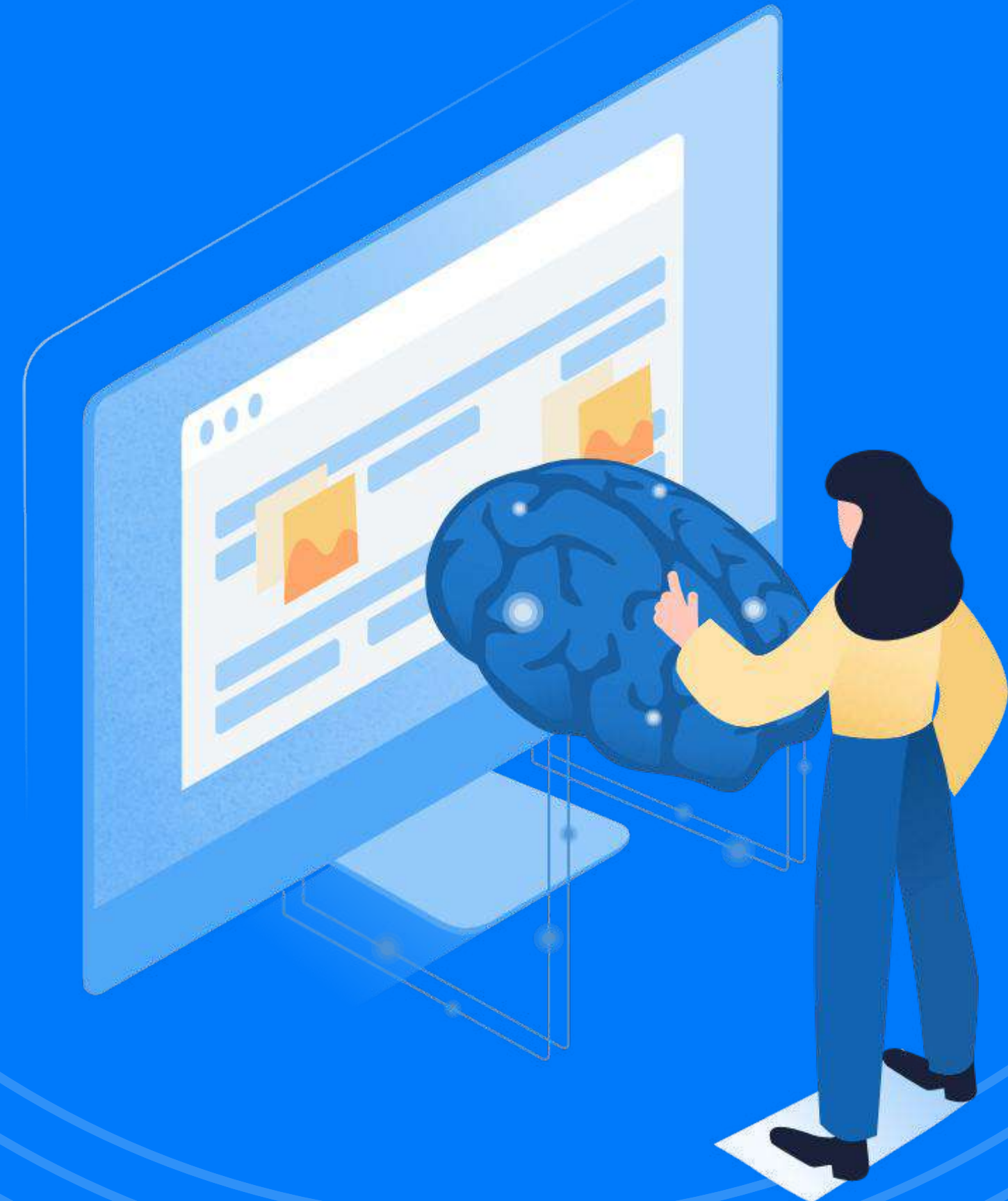
24/7 SUPPORT & ACCESS TO THE WHOLE BIDSCUBE TEAM'S EXPERTISE

In the digital world of programmatic advertising, we offer the most live contact to increase your results: your manager is available for any questions seven days a week!

Our technical specialists take over all the development and integration work, providing an individual approach for each client following their specific requests.

Experts with 10+ years of proven track record

Our tech staff and Ad Ops are formed by the best Ad Tech and Mar Tech industry specialists!



UNLIMITED TECHNOLOGY FEATURES ARE WAITING FOR YOU

The technical excellence of the BidsCube system helps our partners to increase their revenue compared to other solutions. With leading-edge programmatic technology, our partners are sure of the result!

+ All ad formats and types

+ oRTB

+ Demand scanner

+ Optimizations tools

+ Global blacklist

+ Sellers.json

+ Traffic bridge

+ Server monitoring tools

+ Discrepancy monitor

+ User management

+ Interactive reports

+ AI optimizer

+ Ads.txt

+ Schain

+ Many more...

AND EVEN MORE PRO FEATURES FOR YOUR SUCCESS!

PRO FEATURE

GZIP Encoded Requests & Responses

Using GZIP, we allow our customers to work with the reduced amount of data transferred in Bid Requests & Bid Responses.

Bidstream Data Access

Get all bidstream data stored and uploaded to the stat server of your choice to analyze or optimize using your algorithms.

Issues Inspector

This feature enables quick troubleshooting on possible no-bid reasons and any other issues that prevent effective trades.

PRO OPTIMIZATION TOOLSET FOR ULTIMATE EFFICIENCY

PRO FEATURE

Automated algorithms will help you to achieve your goals with the least effort! Connecting industry-leading technology and a data-driven approach, we have developed one of the best solutions on the market!

API Statistics

The API Statistics option allows BidsCube WLS customers to connect to partner's platforms via API to push statistics and compare numbers to avoid discrepancies.

User Sync Feature

The User Sync feature helps BidsCube increase all our partners' revenue! Improved targeting, higher transparency, and better results for both the demand and supply sides.

oRTB Validator

This tool allows validation of requests and responses to check partners' examples before or during live trades to identify any incompatibility with specifications and help to move further quickly.

ENHANCED SYSTEM MONITORING

PRO FEATURE

With the BidsCube platform's help, you can access real-time data and control your results with the next-step level of efficiency using custom reports and filtering.

Moreover, it is not about analytics only! White Label partners can control and manage the system, including incoming and outgoing traffic, system load, errors, and failures.

Advertising metrics

Incoming and outgoing requests, responses, bid rate, win rate, and errors

Financial metrics

Complete control of finances, including reports and current benchmarks

Real-Time Trading

Discover bottlenecks and adjust targeting options



NEXT-LEVEL OPTIMIZATION WITH BIDSCUBE TRAFFIC BRIDGE

PRO FEATURE

This feature optimizes and partially automates Ad Ops work, and onwards, it massively improves communication between programmatic ecosystem parts: SSP, DSP, and Ad Exchange.

This one has already decreased the amount of inefficient traffic inside our ecosystem 4-5 times.

So, what does it mean for our partners? It means the exact 4-5 times increased results for BidsCube customers using our programmatic solutions!



DIRECT ACCESS TO THE TOP-TIER COMPANIES' SUPPLY&DEMAND

PRO FEATURE



**BidsCube is an
authorized Huawei
global demand partner**

Tap into premium supply and demand worldwide by connecting to the BidsCube white-label solution.

And that's only the beginning. We offer our customers direct access to supply and demand sources of top-tier companies like:

- ▶ Opera
- ▶ Verve Group
- ▶ Rakuten
- ▶ Inmobi
- ▶ Freewheel
- ▶ Baidu
- ▶ Lenovo
- ▶ TCL

Our partners are proof of the BidsCube AdExchange PRO solution industry quality and technical excellence.

VALUE OF BIDSCUBE COMMUNITY

Bidscube Community is the final stage of our ambition to create the most profitable cooperation between publishers&advertisers, WLS partners, and Ad Tech companies to produce more value for all participants.

Our technological solution ensures income growth and guarantees financial security for all members of the environment without additional fees.



Financial security

100% secure space for all participants in the programmatic ecosystem. We guarantee 100% timely payments, as well.

Direct trading

A massive solution that will give you access to direct trading with over 250 traffic providers and other partners.

Single contract

Don't waste your time agreeing on working conditions with all partners. We'll do it for you!

TRADE WITH 2MS BID RESPONSE TIME INSIDE THE BIDSCUBE COMMUNITY!



By trading exclusively within the secure BidsCube Community environment, you can work with top partners without additional fees and commissions to get even better results!

You get access to premium demand or supply from members of our programmatic ecosystem.

Our pride is the technical excellence of our ecosystem. Partners inside it trade with a Bid Response time of less than 2 ms!

CONFIDENTIALITY

Confidentiality is crucial

By maintaining this clear division, we safeguard the integrity and privacy of your data. Our team operates within this framework, with no access granted to your sensitive information. This steadfast commitment to data protection forms the foundation of our ethos, guiding every decision we make.

Data Protection as Priority

Ensuring the security of your data is our foremost concern. We uphold a stringent barrier between your personal information and our day-to-day operations, guaranteeing a workspace free from any potential conflicts. This approach underscores our commitment to prioritizing your requirements above all else.

Your Peace of Mind

Rest assured, your data is handled with the utmost care and discretion. Our unwavering dedication to preserving this separation reflects our unwavering pledge to safeguard your privacy and security. Your trust is of utmost importance to us, and we continuously strive to maintain it through transparency, diligence, and a steadfast focus on your data's confidentiality.

CHOOSE PLAN THAT WORKS FOR YOU

WANT TO JOIN?

LITE

- + All formats and types
- + openRTB (banner, native, video, audio)
- + VAST Integration
- + Dedicated servers
- + Dedicated DB servers
- + One Traffic Scanner
- + Demand Scanner
- + Global blacklist
- + Traffic Bridge
- + Limited Bidstream data access *
- + Discrepancy monitor
- + QPS limits
- + Limited Errors reasons monitoring

- ✓ Payments: Pre-pay
- ✓ Setup fee: \$0
- ✓ Minimum servers: 1

from \$300 / month

Starting price for 1 server

PRO

- + **Everything included in the LITE version**
- + White Labelling
- + Unlimited Traffic Scanners
- + PRO tools
- + Private Marketplace (PMP)
- + Advanced Bidstream data access
- + Custom development
- + User sync

- ✓ Revenue share 3-6%
- ✓ Payments: NET 30
- ✓ Setup fee: \$1000
- ✓ Minimum servers: 4
- ✓ Flexible scaling options

from \$1200 / month

Starting price for 4 servers

ENTERPRISE

Unlock comprehensive possibilities of enterprise licensing with limitless custom development options, long-term support, and self-hosted deployment for complete operational autonomy.

**feel free to
contact us**

and discover further details

BECOME OUR PARTNER IN 4 STEPS

Our algorithm for working with partners aims to minimize your efforts and maximize your result. With BidsCube, you can earn more using programmatic solutions in the shortest possible time!

STEP 1

DISCUSS CONDITIONS

We discuss individual conditions to achieve your goals and sign a contract quickly.

STEP 2

SIGN A CONTRACT

We guarantee all our partners and customers 100% financial and legal security space.

STEP 3

INTEGRATE TO ECOSYSTEM

Our technical team will help you to integrate into our ecosystem as fast & easily as possible.

STEP 4

ENJOY MAKING A PROFIT!

Start earning money using BidsCube programmatic ecosystem immediately after the integration!



WANT TO HEAR MORE ABOUT OPPORTUNITIES TO EARN WITH BIDSCUBE ECOSYSTEM?

Get in touch with our team at any time!

Bidscube Team 

✉ sales@bidscube.com 🌐 bidscube.com