



LAUNCH YOUR ADVERTISING BUSINESS STARTING FROM \$300!

Ad business has never been so affordable!

WANT TO JOIN?



Our team started a long journey in the field of advertising back in 2014. Over time, we gained expertise, and to make digital advertising accessible to everyone, we created our solution. It has immediately won the attention of customers! Now BidsCube is a team of industry-proven experts developing a cutting-edge programmatic ecosystem connecting AdTech market players. We have a solution for everyone!

\$100m+

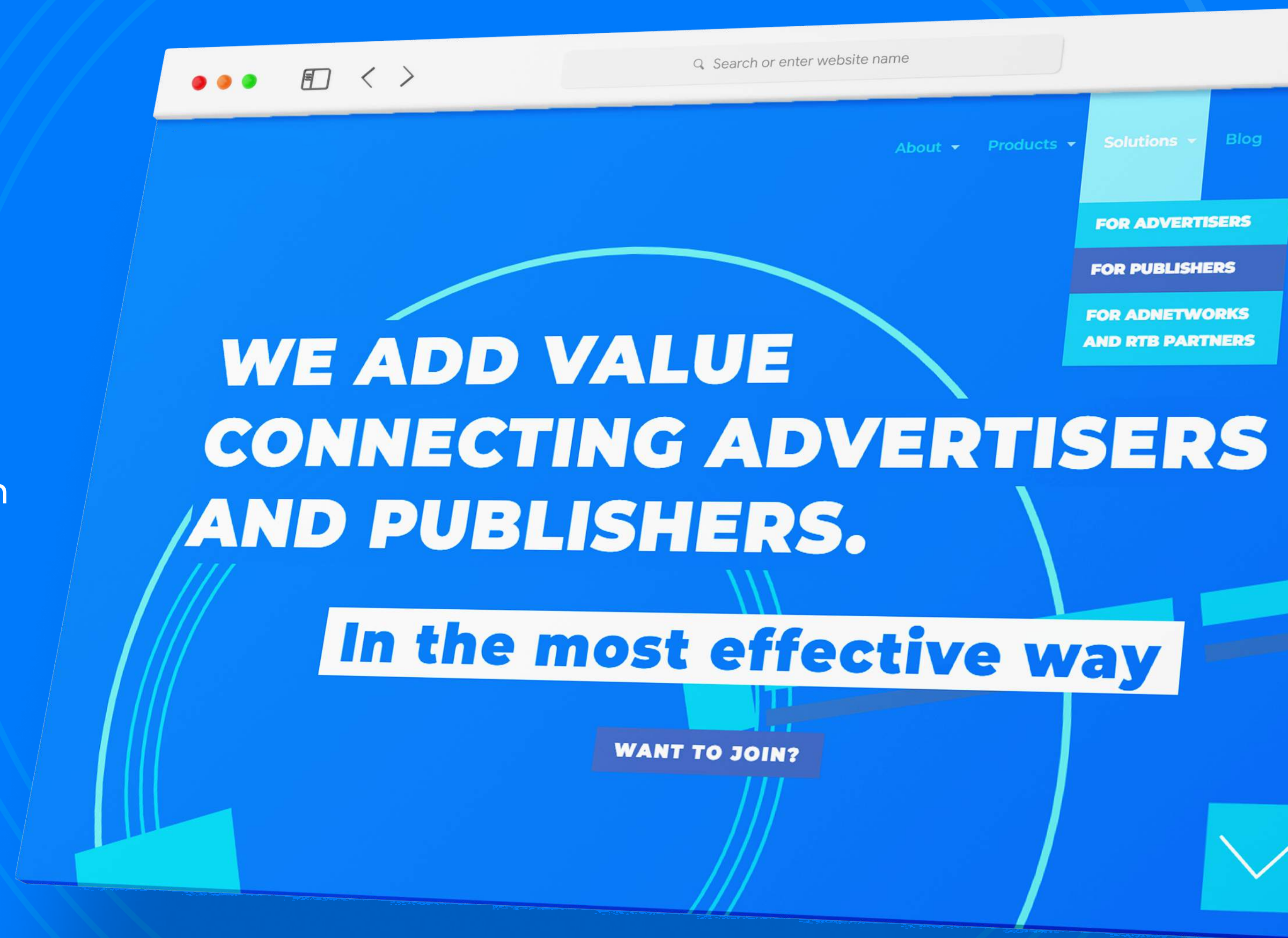
Gross Revenue across our ecosystem yearly

250+

Active clients using our technology

2010

Year we started in digital advertising



94%

of partners started to earn more within BidsCube white-label solutions

* according to a survey of more than 250+ partners and 150+ clients of BidsCube ecosystem solutions

6%

Achieved the same revenue results

BE SURE OF THE RESULT!

3.5m ad requests / 1 sec

A fault-tolerant and reliable solution

40+ account managers

Your manager is available 24/7

Ecosystem solutions

You will get what you need!

Fast and easy integration

5+ days estimated time for integration of the platform

WHAT IS BIDSCUBE WHITE LABEL AD EXCHANGE?

In the world of programmatic advertising, White Label means a ready-made solution for automated ads buying, selling, and exchanging to make a profit!

We offer a scalable, fault-tolerant AdExchange solution that can handle high workloads and billions of operations per second using a progressive software and technology stack. It is a simple but professional tool to earn unlimited income in the AdTech industry!

With BidsCube WLS, you become a part of the BidsCube Ecosystem!

Ecosystem's core goal is to increase the value of every member depending on his needs.



HOW BIDSCUBE ADEXCHANGE WORKS FOR OUR PARTNERS

SELL SIDE

Publishers
SITE / APP OWNERS

SUPPLY-SIDE PLATFORM
SSP's
BidsCube SSP WLS

BidsCube
AdExchange

DSP's
BidsCube DSP WLS

DEMAND-SIDE PLATFORM

BUYER SIDE

Advertisers
BRAND/AGENCY

Transparency

Understanding the importance of transparency in trading allows us to be open in all aspects of working with our partners.

Integrity

Our solutions are connected in the ecosystem, allowing us to provide even more profitable services.

Efficiency

Our main goal is to improve your result and help you to earn more using BidsCube products.

SAVE TIME AND MONEY WITH WHITE-LABEL ADEXCHANGE

Instead of an expensive and lengthy process of in-house development of software, the BidsCube White-Label AdExchange solution will save you money, time and gives you an ultimate package of tools to increase your revenue from day one!

BENEFITS OF BIDSCUBE WLS ▼

BIDSCUBE WHITE LABEL ADEXCHANGE

Fast and easy way to start making money in programmatic

- ▶ More than 150 ecosystem partners are ready to trade with.
- ▶ 10+ years of our team experience in advertising is your key to success.
- ▶ Ecosystem and complex solution. You will get all you need!
- ▶ Efficient and reliable software without downtimes or interruptions.
- ▶ Cost and time-saving solution.
- ▶ Constantly upgrading our platform to the latest market needs.

from \$300/month

Starting price for 1 AdServer

IN-HOUSE SOFTWARE DEVELOPMENT

The hard and long journey to success. Without guarantees

- ▶ Hiring high-level Dev and AdTech specialists with competitive salaries.
- ▶ Time and money investments in product development, infrastructure and architecture.
- ▶ Resources for constant upgrading and maintenance.
- ▶ Custom development of the connection to every market player.

≈ \$500,000/yearly

Starting cost of Ad software development

UNLIMITED TECHNOLOGY FEATURES ARE WAITING FOR YOU

The technical excellence of the BidsCube system helps our partners to increase their revenue compared to other solutions. With leading-edge programmatic technology, our partners are sure of the result!

+ SSP Inspector

+ oRTB Validator

+ Crids Blocker

+ AI Optimizator

+ Adm validator

+ Bidstream Data

+ Minimum Bidfloor

+ SSP Mobile App

+ User Sync

+ Exchange Logs

+ Interactive Reports

+ DSP Inspector

+ Many more...

REAL-TIME CONTROL AND TRANSPARENT REPORTING

With the help of our platform, you can quickly receive real-time data and control your results with the next-step level of efficiency. There is no longer a need to wait for reports to evaluate performance.

Real-time data and filtering

Stay up to date with the latest results of your work

Easy-to-use interfaces

Manage your campaigns or inventory using the convenient platform



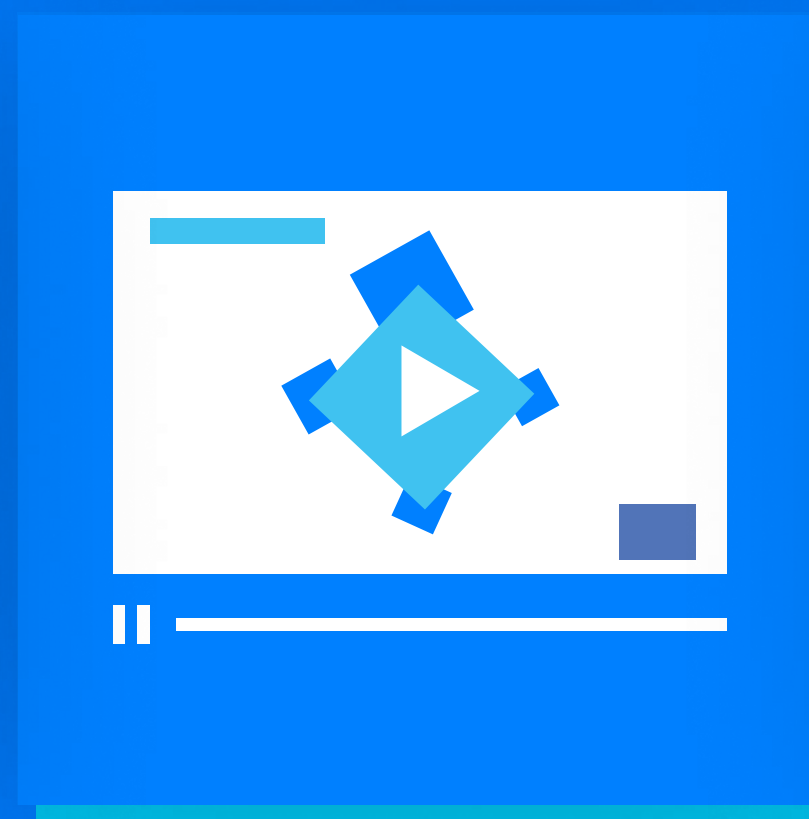
ALL AD FORMATS AND OPTIONS AVAILABLE IN THE INDUSTRY

BidsCube White-Label Ad Exchange platform allows our customers efficiently work with the most common ad formats – Banner, Video, Native, Audio, and across all devices.

Banner



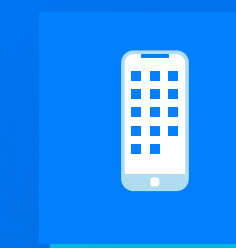
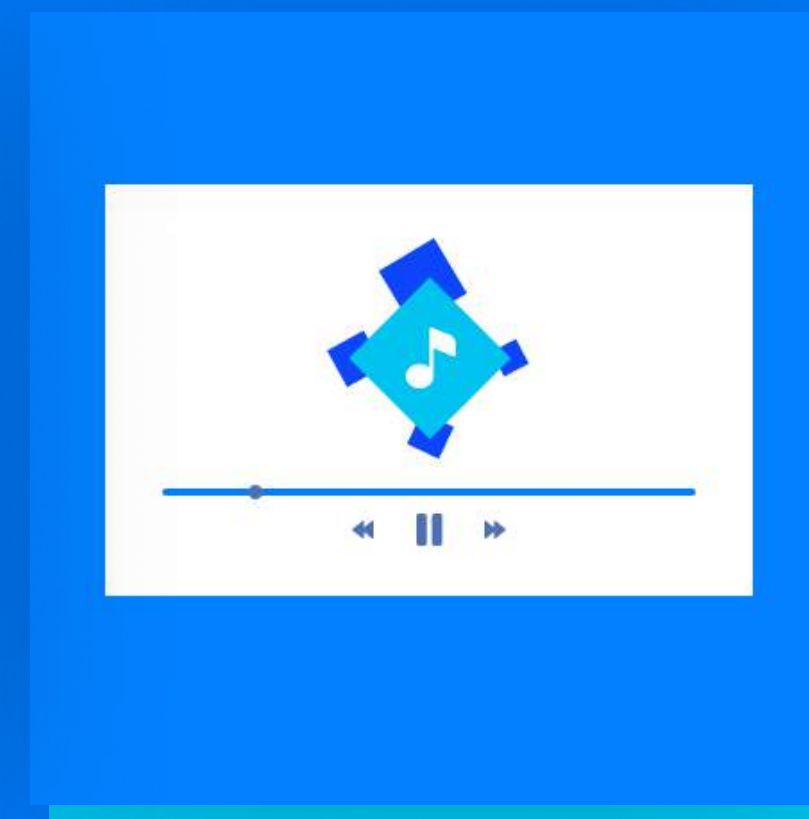
Video



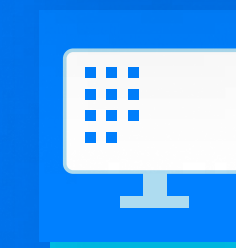
Native



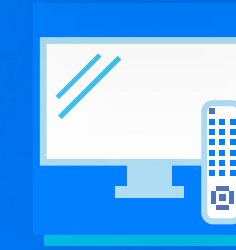
Audio



Mobile



Desktop



Connected TV

24/7 SUPPORT & ACCESS TO THE WHOLE BIDSCUBE TEAM'S EXPERTISE

In the digital world of programmatic advertising, we offer the most live contact to increase your results: your manager is available for any questions 7 days a week!

Our technical specialists take over all the development and integration work, providing an individual approach for each client following their specific requests.

Experts with 10+ years of proven track record

Our tech staff and AdOps are formed by the best AdTech and MarTech industry specialists!



ONLY TRUSTED PARTNERS & GUARANTEED AD QUALITY

We carefully approach the choice of partners. We work only with reliable players, carefully choosing demand and supply channels to create maximum value for all Community and Ecosystem members.

We work with trusted industry leaders from ad scanners, and on the product side, we offer out-of-the-box integrations with many platforms to give our customers an ultimate choice.



ENHANCED SYSTEM MONITORING

PRO FEATURE

With the BidsCube platform's help, you can access real-time data and control your results with the next-step level of efficiency using custom reports and filtering.

Moreover, it is not about analytics only! WLS partners can control and manage the system, including incoming and outgoing traffic, system load, errors, and failures.

Advertising metrics

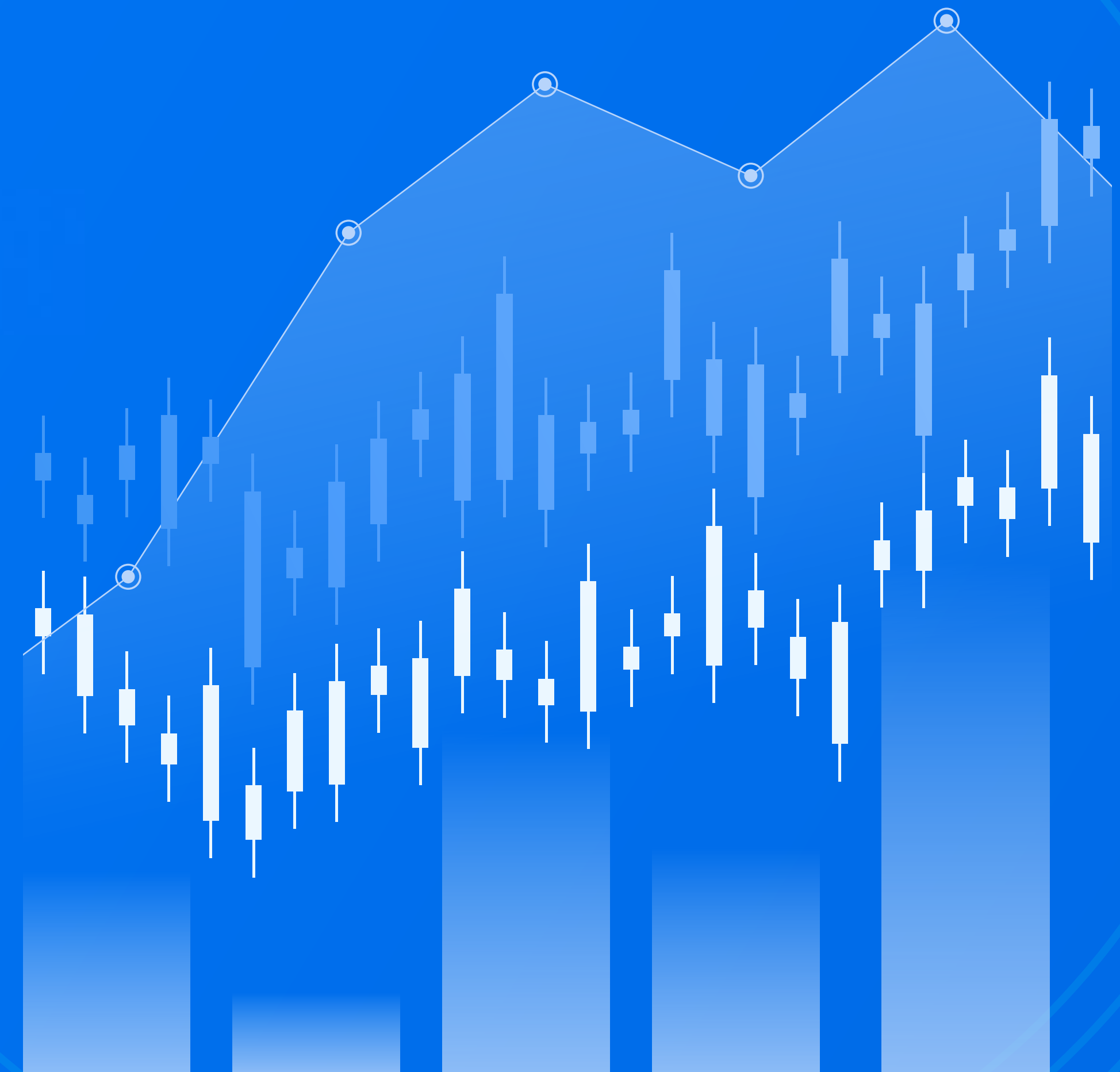
Incoming and outgoing requests, responses, bid rate, win rate, and errors

Financial metrics

Complete control of finances, including reports and current benchmarks

Real-Time Trading

Discover bottlenecks and adjust targeting options



PRO OPTIMIZATION TOOLSET FOR NEXT-LEVEL EFFICIENCY

PRO FEATURE

Automated algorithms will help you to achieve your goals with the least effort! Connecting industry-leading technology and a data-driven approach, we have developed one of the best solutions on the market!

API Statistics

The API Statistics ability allows BidsCube WLS customers to connect to partner's platforms via API to push statistics and compare numbers to avoid discrepancies.

User Sync Feature

The User Sync feature helps BidsCube increase all our partners' revenue! Improved targeting, higher transparency, and better results for both the demand and supply sides.

oRTB Validator

This tool allows validation of requests and responses to check partners' examples before or during live trades to identify any incompatibility with specifications and help to move further quickly.

AND EVEN MORE PRO FEATURES FOR YOUR SUCCESS!

PRO FEATURE

GZIP Encoded Requests & Responses

Using GZIP, we allow our customers to work with the reduced amount of data transferred in Bid Requests & Bid Responses.

Bidstream Data Access

Get all bidstream data stored and uploaded to the stat server of your choice to analyze or optimize using your algorithms.

Issues Inspector

This feature enables quick troubleshooting on possible no-bid reasons and any other issues that prevent effective trades.

VALUE OF BIDSCUBE COMMUNITY

Bidscube Community is the final stage of our ambition to create the most profitable cooperation between publishers&advertisers, WLS Partners, and AdTech companies with the goal to produce more value for all participants.

Our technological solution ensures income growth and guarantees financial security for all members of the environment without additional fees.



Financial security

100% secure space for all participants in the programmatic ecosystem. We guarantee 100% timely payments, as well.

Direct trading

A massive solution that will give you access to direct trading with over 250 traffic providers and other partners.

Single contract

Don't waste your time agreeing on working conditions with all partners. We'll do it for you!

TRADE WITH 2MS BID RESPONSE TIME INSIDE THE BIDSCUBE COMMUNITY!



By trading exclusively within the secure BidsCube Community environment, you can work with top partners without additional fees and commissions to get even better results!

You get access to premium demand or supply from members of our programmatic ecosystem.

Our pride is the technical excellence of our ecosystem. Partners inside it trade with a Bid Response time of less than 2 ms!

CHOOSE PLAN THAT WORKS FOR YOU

WANT TO JOIN?

LITE

- + Dedicated servers
- + Dedicated DB server
- + Fixed price
- + Optimization tools
- + 1 ad scanner
- + Real-time analytics
- + **BidsCube Community membership**

- ✓ Payments: Pre-pay
- ✓ Setup fee: \$0
- ✓ Minimum servers: 1

from \$300/month

Starting price for 1 Ad Server

PRO

- + **Everything included in the LITE version**
- + Revenue share from 8%
- + Your custom branding
- + Unlimited scanners on your choice
- + PRO Tools
- + Servers monitoring tools
- + Deep analytics
- + Private Marketplace (PMP)
- + User sync

- ✓ Payments: NET 30
- ✓ Setup fee: \$1000
- ✓ Minimum servers: 4
- ✓ Flexible scaling options*

from \$1200/month

Starting price for 4 Ad Servers

BECOME OUR PARTNER IN 4 STEPS

Our algorithm for working with partners aims to minimize your efforts and maximize your result. With BidsCube, you can earn more using programmatic solutions in the shortest possible time!

STEP 1

DISCUSS CONDITIONS

We discuss individual conditions to achieve your goals and sign a contract quickly.

STEP 2

SIGN A CONTRACT

We guarantee all our partners and customers 100% financial and legal security space.

STEP 3

INTEGRATE TO ECOSYSTEM

Our technical team will help you to integrate into our ecosystem as fast & easily as possible.

STEP 4

ENJOY MAKING A PROFIT!

Start earning money using BidsCube programmatic ecosystem immediately after the integration!



WANT TO HEAR MORE ABOUT OPPORTUNITIES TO EARN WITH BIDSCUBE ECOSYSTEM?

Get in touch with our team at any time!

Bidscube Team 

✉ sales@bidscube.com 🌐 bidscube.com